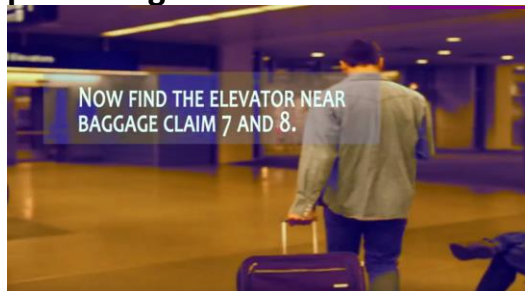
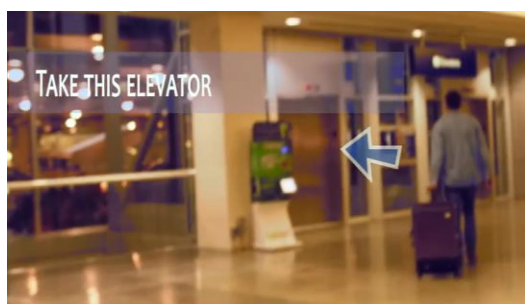


How to Find the Gopher Chauffeur at the Airport

The Gopher Chauffeur is a free ride service provided by UMN Boynton Health for international students traveling to the University of Minnesota from the Minneapolis-St. Paul International Airport. If you arrive at the airport on Monday, August 15 through Saturday, August 27 within the times of 10:00am-9:20pm, the Gopher Chauffeur will be available to give you a ride to campus and several nearby locations. In order to use the Gopher Chauffeur, **please register online at z.umn.edu/airportrides.**



Find the elevator near Baggage Claim numbers 7 and 8.



Take the elevator down.



To level "T" for transportation.



Go straight out from the elevator.



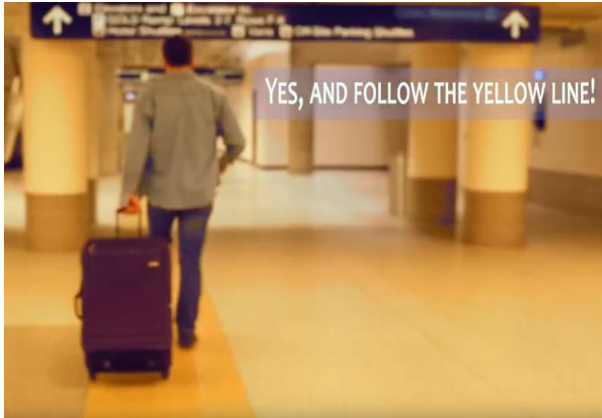
Pass the "Travel Express" shop on the left.



If you are unsure of where to go, it is okay to ask for help! There is an information desk with someone who can help you.



Turn right from the information desk, and head towards the escalators.



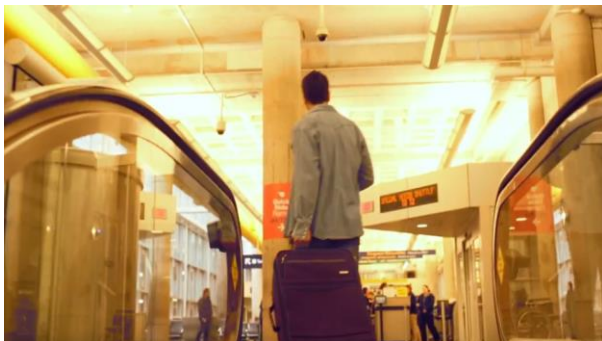
Follow the yellow-gold tile on the floor.



Follow the sign; take the escalator on the left to the "Vans."



It is up one level.



This is the floor where you can meet the Gopher Chauffeur.



NOW JUST GO THROUGH THESE DOORS ON YOUR LEFT!

After getting off the escalator, exit using the doors on your left.



YOU HAVE NOW REACHED THE STOP FOR GOPHER CHAUFFEUR!

You arrived at the place to meet the Gopher Chauffeur!



This is the parking area where you will find the Gopher Chauffeur.



Look for Goldy Gopher and maroon and gold on the Gopher Chauffeur!